

VERSION 4.3 | MARCH 11TH, 2023

USER GUIDE



RPG V4 MODEL

huggingface.co/Anashel/rpg

Table of Content >

Introduction >	2
Style Range	3
Cloth Style	4
Art Direction and Shader	5
Training Concept	6
Core Prompt >	7
Prompt	7
Breakdown	7
Avatar Shot Style	8
Negative Prompt	9
Step & CFG Grid	10
Control Net	11
Alternative Prompt	13
RPG v4 Workflow >	35
Example of IMG2IMG flow	36
Step 1 Generate your main character with your custom prompt	36
Step 2 Choose a seed and explore render style using your selected seed	36
Step 3 Run a IMG2IMG Polishing Prompt	37
Character Core Style >	38
Character Race and Class	39
Armor Type	40
APPENDIX	41
Automatic1111	41
StylePile Extension	41
Contact & Support	41

Introduction >

RPG V4 has been trained to focus on **Medieval and Role Playing Game** characters attributes and elements, like heavy armor, leather armor, mage cloak and similar content. The model training uses **only original work** created with tools including Unreal Engine, custom editing, IMG2IMG painting and MidJourney. **Using an artist name** or style will still have an impact as Stable Diffusion AI still understands the meaning of these references, even if their work were not used in this model.

Prompt Difficulty	Seed Randomness	Optimal CFG	Optimal Steps
Easy Medium Hard	Light Medium Heavy	3 4.5 6 8.5 10 12	30 50 75 90 125 150
IMG2IMG Flow	Trigger Word	Negative Prompt	Bias
Average Good Very Good	None (Global Training)	Recommended	Women

Sample | **Rogue**



Sample | **Mage**

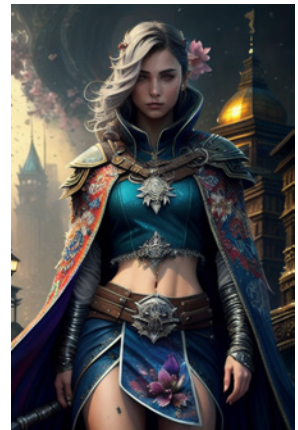
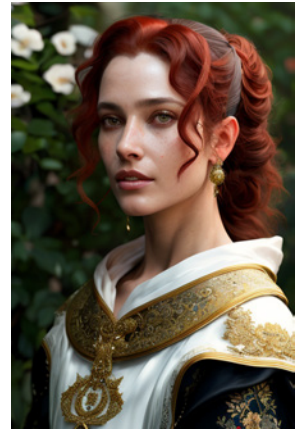
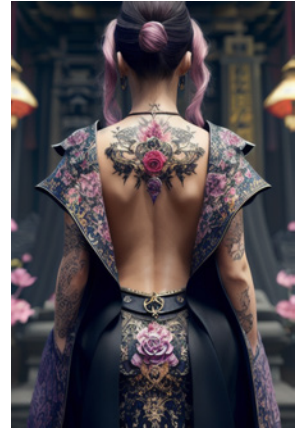
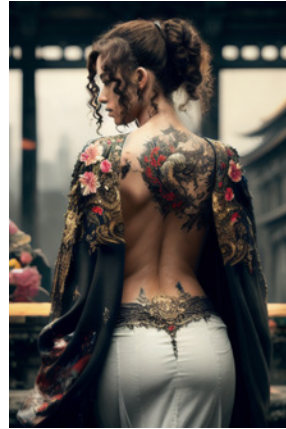


Sample | **Assassin**



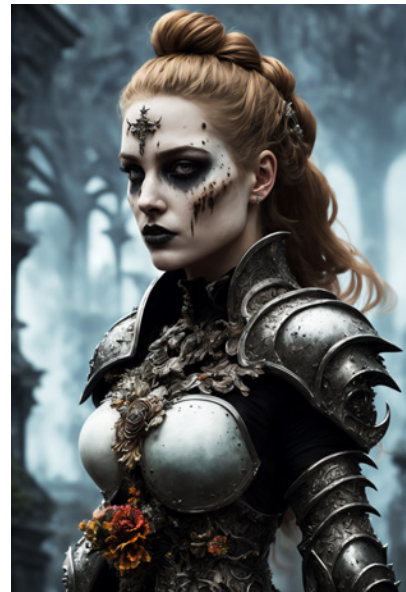
Style Range |

RPG V4 supports a vast range of shading styles and effects. Refer to the workflow section to help you finetune the exact style you wish to achieve for your creation. **Example of style** using variation on the core prompt structure.



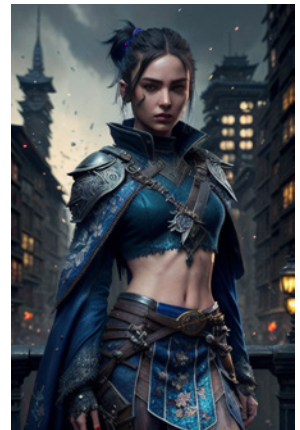
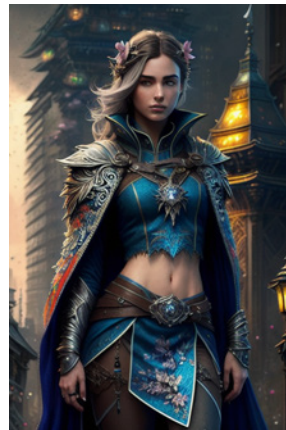
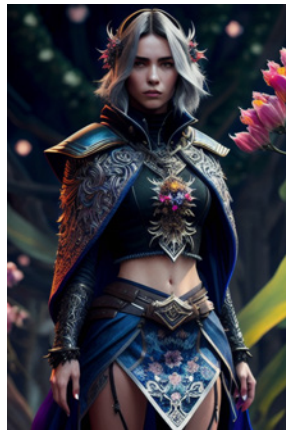
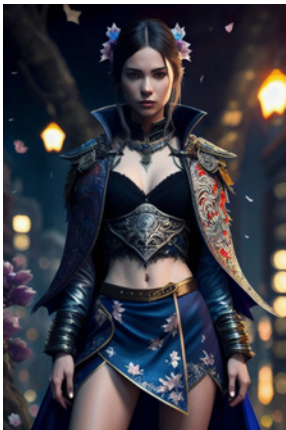
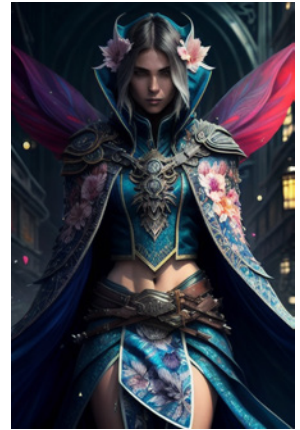
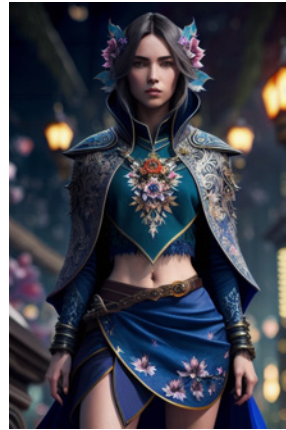
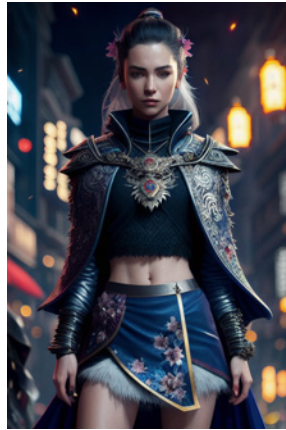
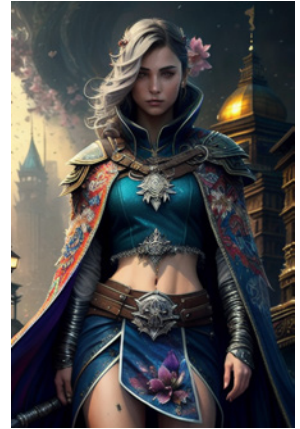
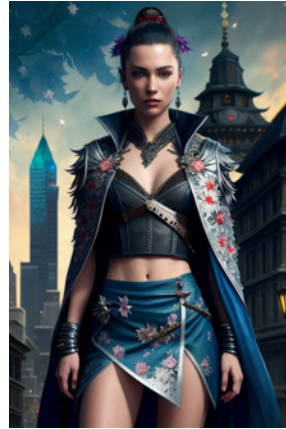
Cloth Style |

RPG V4 has been trained on many clothing and fabrics details. The current version has a bias to floral-like patterns (flower, leaf and feather). **Example of fabrics** generated using RPG v4.

Cloak and delicate fabrics**Leather and stitched****Heavy Armor and metal**

Art Direction and Shader |

Installing the extension **StylePile** is a great way to help you experiment with shading and rendering style. Here is an example of **12 images** generated with “**Image Type**” and “**Direction**” set to random.



Training Concept |

RPG v4 does **not** use trigger words. You can use it for landscape as well as cloth, character and object. Hundreds of concepts and styles have been trained over four months using **exclusively original content**. Similar to the base Stable Diffusion model, prompt engineering and creative experimentation will let you get the most out of this model.

Heavy Armor



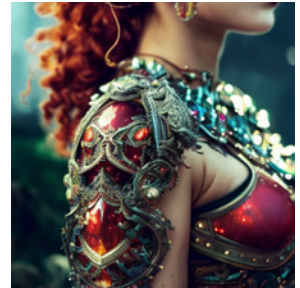
Leather Armor



Stitched Leather Armor



Intricate Metal



Body Tattoo



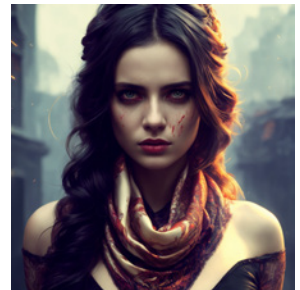
Hair style and color



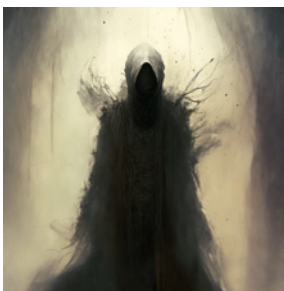
Beard style and color



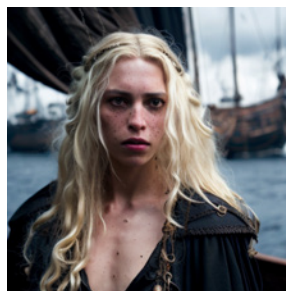
Scarf and Silk



Ghost and Spirit



Ship and Water



Action Shot



Dystopian Universe



Core Prompt >



Method	TXT2IMG
Size	512 x 768
Model	RPG v4
Diffusion	DPM++ 2S a Karras
VAE	vae-ft-mse-840000-ema
Sample	75 steps @ CFG 5.5
Seed Test	3276458436
Web UI	Automatic 1111

Prompt |

full body, walking pose, slow motion, (rogue thief:1.2) female wearing full body multiple stitched layer (leather armor:1.2), (white silk cloak), (fabric with intricate pattern:1.2), (insanely detailed, bloom:1.5), (highest quality, Alessandro Casagrande, Greg Rutkowski, Sally Mann, concept art, 4k), (analog:1.2), (high sharpness), (detailed pupils:1.1), (painting:1.1), (digital painting:1.1), detailed face and eyes, Masterpiece, best quality, (highly detailed photo:1.1), 8k, photorealistic, (long dark blonde Hair, ponytail haircut, ecstatic:1.1), (young woman:1.1), By jeremy mann, by sandra chevrier, by maciej kuciara, sharp, (perfect body:1.1), realistic, real shadow, 3d, (asian temple background:1.2), (by Michelangelo)

Breakdown |

- **Rogue Thief:** Character Class
- **Female:** Character Gender
- **Multiple Layer Stitched:** Armor Details
- **Leather Armor:** Armor Type
- **White Silk Cloak:** Cloak Style (optional)
- **Fabric with intricate Pattern:** Clothing Pattern
- **Long Dark Blonde:** Hair Color
- **Ponytail Haircut:** Hair Style
- **Young Women:** Character Age
- **Asian Temple:** Portrait Background

Avatar Shot Style |

The beginning of the prompt let you switch between two different avatar style:

- 1: **Close up** : **close-up head, facing camera**, realistic digital...
- 2: **Medium Range** : **full body, walking pose, slow motion**, realistic digital...
- 3: **Full Body** : **A (full body:1.3) shot at 8k resolution, splash art, fantastic comic book style**, realistic...

With **Close-up** Start Prompt |



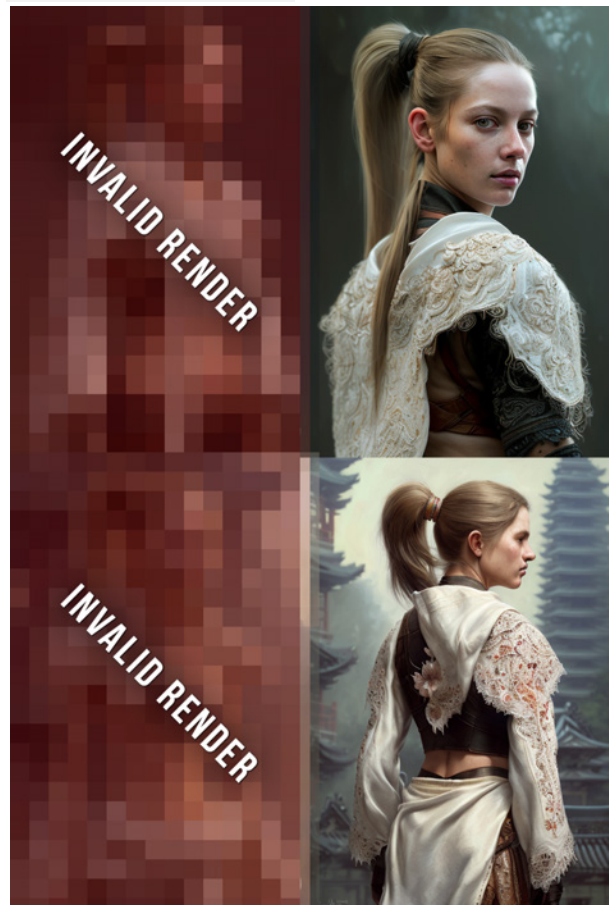
With **Medium Range** Prompt |



Negative Prompt |

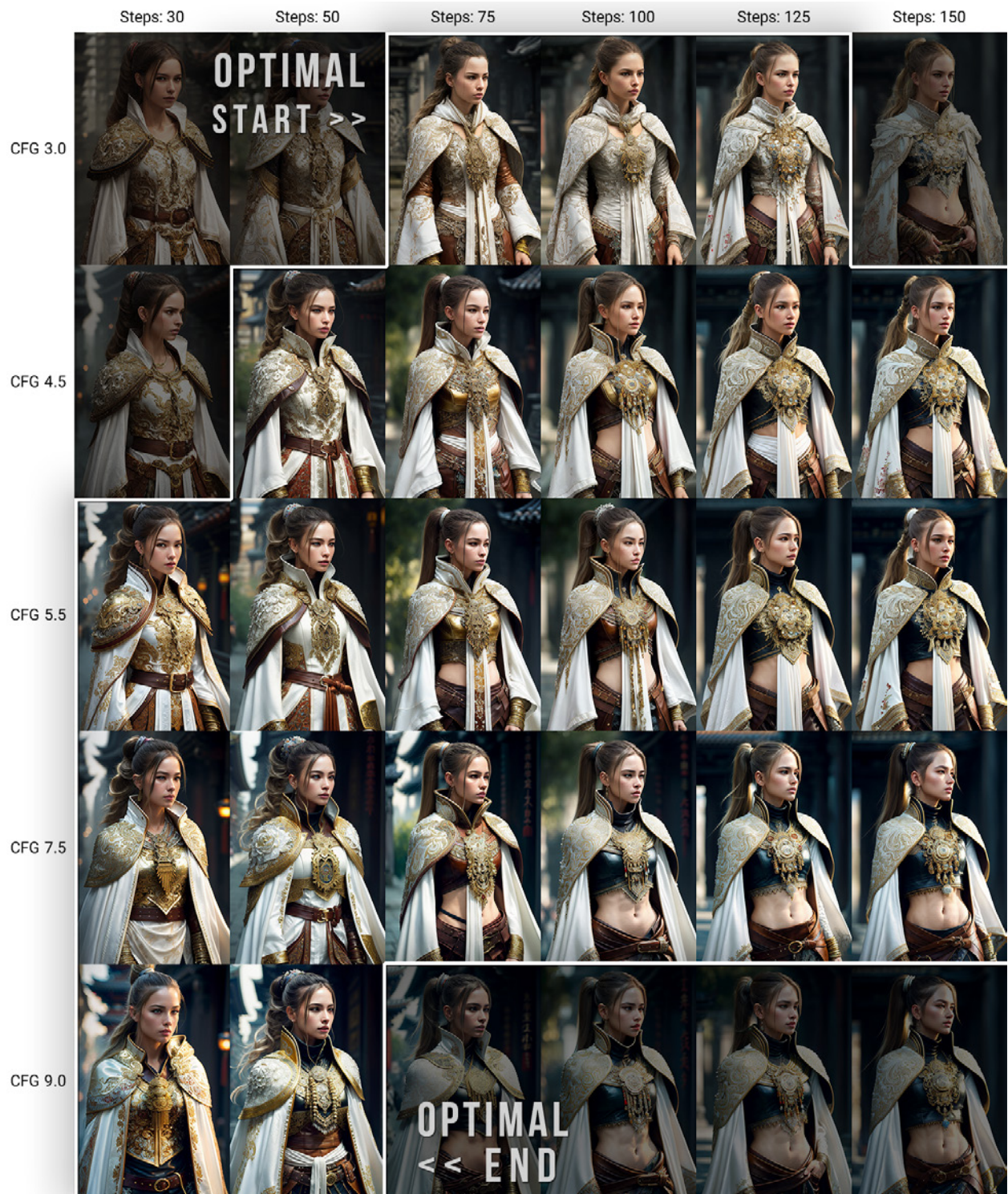
This negative prompt has been optimized to help produce a higher rate of good images over multiple seeds. You can also [add optional negative prompts](#) to target specific aspects of the art you want to remove from. The model has a tendency to add flower patterns or facial marking. For example, (flower:1.2) will help you remove the chance of occurrence. If some armor style 'bleeds' you can add (metal:1.1) in negative when doing cloth or (cloak:1.1) for heavy armor. This also applies when doing a male character, you can add (women:1.2) in your negative prompt.

Exemple: (flower:1.2), (Facial Marking:1.1), nude, (bad art, low detail, pencil drawing:1.4), (plain background, grainy, low quality, mutated hands and fingers:1.4), (watermark, thin lines:1.2), (deformed, signature:1.2), (blurry, ugly, bad anatomy, extra limbs, undersaturated, low resolution), disfigured, deformations, out of frame, amputee, bad proportions, extra limb, missing limbs, distortion, floating limbs, out of frame, poorly drawn face, poorly drawn hands, text, malformed, missing fingers, cropped

With Negative Prompt |**Without Negative Prompt |**

Step & CFG Grid |

RPG V4 Model is optimized for a lower Steps & CFG value. Use this grid to help you maximize your results.



Control Net |

Contr Net gives you the ability to manage your camera angle and character pose.

To install Control Net, go to: <https://github.com/Mikubill/sd-webui-controlnet>

Suggested Settings >

Preprocessor	Model	Weight	Annotator Res	Canvas
scribble	Control_sd15_Scibble	0.9 - 1.0	1024 - 2048	512x768

Standing Pose |



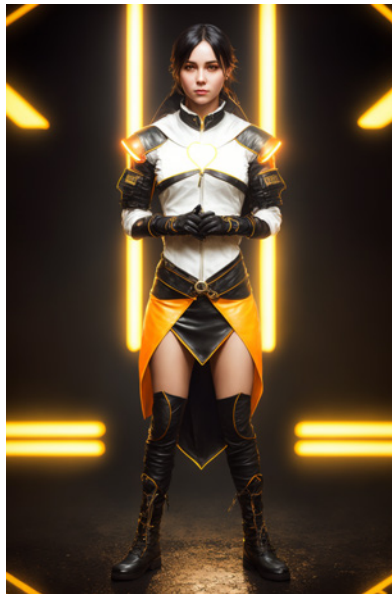
Action Pose |



Control Net Sample |

Pose Source: <https://huggingface.co/Anashel/rpg/tree/main>

Control Source



Alternative Prompt |

Barbarian Character _

Prompt Source: www.lexica.art



Prompt

photo of the most beautiful artwork in the world featuring soft lustrous male hero, ((epic heroic fantasy muscular men rugged wet wounded hero angry looking with long hair and long beard and fierce looking in a dynamic posture dying on the floor, fantastic location, majestic cluttered environment)), full body 8k unity render, action shot, skin pores, very dark lighting, heavy shadows, detailed, detailed face, (vibrant, photo realistic, realistic, dramatic, dark, sharp focus, 8k), (weathered damaged old worn leather outfit:1.4), (intricate:1.4), decadent, (highly detailed:1.4), digital painting, octane render, artstation, concept art, smooth, sharp focus, illustration, art by artgerm, (loish:0.23), wlop ilya kuvshinov, and greg rutkowski and alphonse mucha gracias, (global illumination, studio light, volumetric light), heavy rain, particles floating

Negative

flower, facial marking, (women:1.2), (female:1.2), blue jeans, 3d, render, doll, plastic, blur, haze, monochrome, b&w, text, (ugly:1.2), unclear eyes, no arms, bad anatomy, cropped, censoring, asymmetric eyes, bad anatomy, bad proportions, cropped, cross-eyed, deformed, extra arms, extra fingers, extra limbs, fused fingers, jpeg artifacts, malformed, mangled hands, misshapen body, missing arms, missing fingers, missing hands, missing legs, poorly drawn, tentacle finger, too many arms, too many fingers, watermark, logo, text, letters, signature, username, words, blurry, cropped, jpeg artifacts, low quality, lowres

Landscape & Environment _

Prompt Source: www.lexica.art

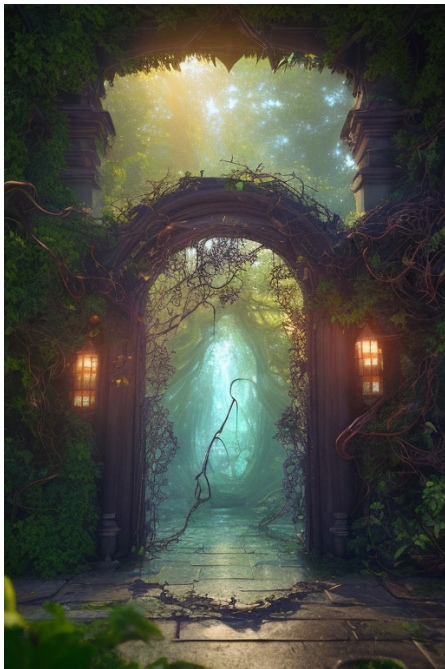


Prompt

(Digital Artwork:1.3) of (Sketched:1.1) octane render of a mysterious dense forest with a large (magical:1.2) gate (portal:1.3) to the eternal kingdom, blade runner, intricate (vine:1.2), massive tree in liquid metal, realistic digital painting portrait, shot at 8k resolution, petrol liquid, pastel color, splash art, blue and purple magic universe, light engrave in intricate details, (light particle:1.2), (game concept:1.3), (depth of field:1.3), global illumination, Highly Detailed, Trending on ArtStation

Negative

none



Cyberpunk Character

Prompt Source: www.lexica.art

Prompt

full body shot photo of the most beautiful artwork in the world featuring a modern female (**rogue thief:1.1**) wearing multiple layer (**leather armor:1.1**), sexy, big eyes, urban **tokyo futuristic look**, neon lights, night, slow motion, reflections, orange raincoat, intricate detail, nostalgia, high boots, heart professional majestic oil painting by Ed Binkley, Atey Ghailan, Studio Ghibli, by Jeremy Mann, Gregory Manchess, Antonio Moro, trending on ArtStation, trending on CGSociety, Intricate, High Detail, Sharp focus, dramatic, photorealistic painting art by midjourney and greg rutkowski

Negative

cartoon, 3d, ((disfigured)), ((bad art)), ((deformed)),((extra limbs)), ((extra barrel)),((close up)),((b&w)), weird colors, blurry, (((duplicate))), ((morbid)), ((mutilated)), [out of frame], extra fingers, mutated hands, ((poorly drawn hands)), ((poorly drawn face)), (((mutation))), (((deformed))), ((ugly)), blurry, ((bad anatomy)), (((bad proportions))), ((extra limbs)), cloned face, (((disfigured))), out of frame, ugly, extra limbs, (bad anatomy), gross proportions, (malformed limbs), ((missing arms)), ((missing legs)), (((extra arms))), (((extra legs))), mutated hands, (fused fingers), (too many fingers), (((long neck))), (((tripod))), (((tube))), Photoshop, video game, ugly, tiling, poorly drawn hands, poorly drawn feet, poorly drawn face, out of frame, mutation, mutated, extra limbs, extra legs, extra arms, disfigured, deformed, cross-eye, body out of frame, blurry, bad art, bad anatomy, 3d render, (((umbrella)))



Warrior Character _

Prompt Source: www.lexica.art



Prompt

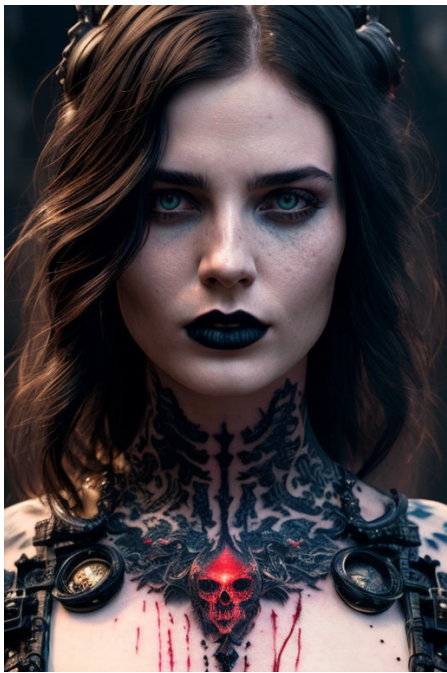
A (full body:1.3) shot at 8k resolution, splash art, fantastic comic book style, photorealistic, intense look, anatomical photorealistic digital painting portrait of a (old male:1.3) human (warrior:1.3) in black and gold intricate (heavy armor:1.3) in a (dark and moody universe:1.3), light particle, very detailed skin, samurai, very detailed eyes, (elden ring style:1.3), (warhammer style:1.1), concept artist, global illumination, depth of field, splash art, art by artgerm and greg rutkowski and viktorija gavrilenko

Negative

(symmetry:1.2), facial marking, crown, horn, (helmet:1.3), (hoodie:1.1), clock, Female, visible hand, asian, two face, big hair, open mouth, cartoon, high contrast, poorly drawn, Scribbles, Low quality, Low rated, Mediocre, Screenshot, Software, UI, watermark, text, overlay, getty images, cropped, low quality

Demonic Priest Character _

Prompt Source: www.lexica.art



Prompt

close-up head, facing camera, beautiful satanic female necromancer blood queen, ritualistic (neck tattoo:1.3), (insanely detailed:1.5), ((solo)), (highest quality, Alessandro Casagrande, Greg Rutkowski, Sally Mann, concept art, 4k), (colourful), (high sharpness), ((detailed pupils)), ((painting:1.1)), (digital painting:1.1), detailed face and eyes, Masterpiece, best quality, highly detailed photo:1, 8k, detailed face, photorealistic, (black long Hair:1.1), (young woman), By jeremy mann, by sandra chevrier, by maciej kuciara, smoke and shadow, night, sharp, ((perfect body)), realistic, real shadow, 3d, ((full body)), ((dark and gloomy universe)), (by Michelangelo)



Negative

crown, (facial marking:1.2), cloth gem, jewel, jewelry, (flower:1.3), (cloak:1.1), (bad art, low detail, pencil drawing, old, mature:1.6), (grainy, low quality, mutated hands and fingers:1.5), (watermark, thin lines:1.3), (deformed, signature:1.2), (big nipples, blurry, ugly, bad anatomy, extra limbs, undersaturated, low resolution), disfigured, deformations, out of frame, amputee, bad proportions, extra limb, missing limbs, distortion, floating limbs, out of frame, poorly drawn face, poorly drawn hands, text, malformed, error, missing fingers, cropped, jpeg artifacts, teeth, unsharp

Guardian Character

Prompt Source: @Pag on www.civitai.com



Prompt

(Painting:1.3) of (Detailed illustration:1.3) **A (full body:1.3) shot at 8k resolution, splash art, fantastic comic book style**, photorealistic, intense look, anatomical photorealistic digital painting portrait of a (old male:1.3) human (warrior:1.3) in black and gold intricate (heavy armor:1.3) in a (dark and moody universe:1.3), light particle, very detailed skin,samurai, very detailed eyes, (elden ring style:1.3), (warhammer style:1.1), concept artist, global illumination, depth of field, splash art, art by artgerm and greg rutkowski and viktorija gavrilenko

Negative

(symmetry:1.2), facial marking, crown, (horn:1.1), (helmet:1.3), (hoodie:1.1), clock, Female, visible hand, asian, two face, big hair, open mouth, cartoon, high contrast, poorly drawn, Scribbles, Low quality, Low rated, Mediocre, Screenshot, Software, UI, watermark, text, overlay, getty images, cropped, low qualityLow quality,Bad composition,Faded,(Photo:1.5),(Frame:1.3),watermark,signature



Space Rogue Character _

Prompt Source: @startide on www.civitai.com



Prompt

sci-fi, space rogue thief girl, (smirk:1.1), short hair, black hood, light armor, big grey eyes, beautiful detailed eyes, drawn by Greg Rutkowski, Yoji Shinkawa:0.6

Negative

open mouth, facial marking, flower, bad-hands-5, lipstick, text, watermark



Druid Character _

Prompt Source: @snowdrop on www.civitai.com



Prompt **High Angle detailed** ((dnd druid man portrait)), Continued , HD, (oil painting:1.1), (comic book art style:1.5),(inked outline:1.3), Stunning, Character, Portrait, (((Looking Sideways))), angular features, (dark grey Graduated Bob Hair), (muted natural colors:1.3) in painterly style by Jean Baptiste Monge

Negative (symmetric:1.2), glasses



Note: Step 50 @ CGF 3

Pirate Character _

Prompt Source: [u/borkedbot](https://www.borkedbot.com)

Prompt

cinematic movie of dark witch, dirty pale skin, older women, no makeup, upper body, dark scruffy hair, action shot, wearing torn and dirty black robes, detailed skin, 20 megapixel, canon eos r3, detailed freckles skin, detailed, detailed face, in style of (dark fantasy pirate ship)+, movie grain

Negative

nude, breast, cartoon, 3d, painting, drawing, (disfigured)+, (bad art)+, (deformed)+, (poorly drawn)+, (extra limbs)+, (close up)+, strange colors, blurry, boring, sketch, lackluster, face portrait, self-portrait, signature, letters, watermark, grayscale



Angel Statue _

Prompt Source: www.civitai.com



Prompt

High detail RAW color art, animation, marble skin of a male angel, high angle, marble statue, (((ultra detailed elegant, beautiful face))), (crucifixion), white skin, wearing catholic robe, magical atmosphere, ((long curly hair)), (focus on face), (((gothic cathedral on background))), (detailed skin, skin texture), (intricately detailed, fine details, hyper detailed), raytracing, subsurface scattering, diffused soft lighting, shallow depth of field, by (Oliver Wetter), by Leonardo da Vinci, photographed on a Canon EOS R5, 28mm lens, F/2.8, sharp focus bokeh

Negative

women, female, breast, watermark, text, blur, anime, deformed, bad anatomy, disfigured, poorly drawn face, mutation, mutated, extra limb, ugly, disgusting, poorly drawn hands, missing limb, floating limb, disconnected limb, malformed hands, blurry, (((mutated hands and fingers))), watermark, watermarked, oversaturated, distorted hands, amputation, missing hands, doubled face, obese, doubled hands



Note: Step 150 @ CGF 3

Explorer Landscape _

Prompt Source: www.mage.space



Prompt explorer in deep elder growth forest intricately detailed
natural volumetric lighting fantasy atmosphere

Negative Extra limbs, extra fingers, long neck, deformed



Banshee Spirit _

Prompt Source: @Jah on www.mage.space



Prompt

portrait of hyperdetailed terrifying dementor from harry potter
cinematic shot on canon 5d ultra realistic skin accurate
hands Steve Henderson Fabian Perez Henry Asencio
Jeremy Mann Marc Simonetti fantasy magical horror
atmosphere

Negative

none



Note: Euler A | Step 30 @ CGF 3

Ranger Character _

Prompt Source: @Jah on www.mage.space



Prompt

Intricate dynamic action shot of **rogue** riding a horse,
cinematic Steve Henderson Fabian Perez Henry Asencio
Jeremy Mann Marc Simonetti Fantasy, red dead redemption
2 atmosphere

Negative

Extra limbs, extra fingers, long neck, deformed



Fire Demon Creature _

Prompt Source: @Jah on www.mage.space



Prompt Portrait of a burning fire and lava demon by Byard Wu and Marc Simonetti and George Inness, Fantasy horror atmosphere

Negative none



Arcane Mage Character _

Prompt Source: @Jah on www.mage.space



Prompt

A violent explosion of light striking a woman brightly cinematic shot on canon 5d ultra realistic fire skin intricate clothes accurate hands Steve Henderson Fabian Perez Henry Asencio Jeremy Mann Marc Simonetti fantasy magic atmosphere, extreme hdr

Negative

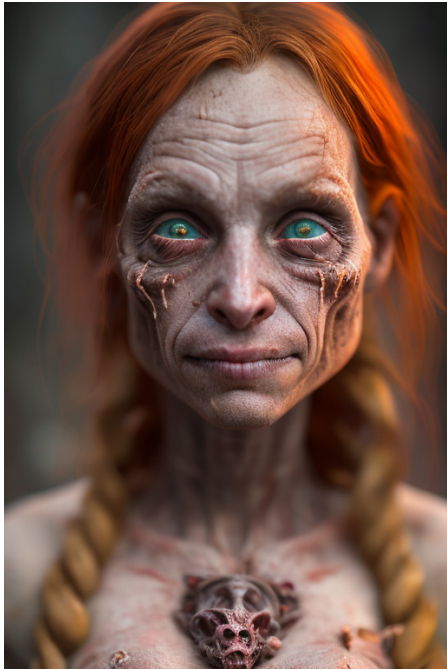
Extra limbs, extra fingers, long neck, deformed, hands



Note: Step 75 @ CGF 3

Undead Character _

Prompt Source: @Zaivraell on www.civitai.com



Prompt

solo, spooky, decayed Swine Person woman, (glowing:0.7) brown eyes, vivid colors, Messy and unwashed orange hair, sores on the body, in action, (evil:1.4), (crazy look), (laugh), extends a hand to the viewer, white arteries, dressed in a magical ribbed sweater with shining runes, magical effects, ultra detailed fantasy cemetery environment, dynamic lighting, atmosphere lighting, perfect eyes, sharp focus, 8k high definition, insanely detailed, intricate

Negative

two face, two head, (symmetry:1.2), facial marking, crown, horn, (helmet:1.3), (hoodie:1.1), clock, Female, visible hand, asian, big hair, open mouth, cartoon, high contrast, poorly drawn, Scribbles, Low quality, Low rated, Mediocre, Screenshot, Software, UI, watermark, text, overlay, getty images, cropped, low quality, Bad composition, Faded, (Photo:1.5), (Frame:1.3), watermark, signature

Bad Kitten



Prompt

Hello Kitty in Gears of War, splash art, movie still, detailed face, cinematic lighting, color, dramatic, octane render, long lens, shallow depth of field, bokeh, anamorphic lens flare, 8k, hyper detailed, 35mm film grain

Negative

[none]



Fantasy Style _

Prompt Source: www.lexica.art



Prompt

close-up head, facing camera, realistic digital painting
 portrait of a gothic female blood elf, (curly hair:1.1), (purple hair:1.3), magical dark and red universe, magic cloth armor with red and yellow engrave in intricate details, (abstract background:1.2), (light particle:1.1), (very detailed skin:1.2), (game concept:1.3), (elden ring style:1.3), (arcane style:0.8), (depth of field:1.3), global illumination, art by hoang lap and fuji hoko and artgerm and greg rutkowski and viktorija gavrilenko

Negative

forehead tattoo, crown, helmet, horn, cartoon, drawing, (two head:1.2), (cartoon:1.2),(contrast:1.4), two face, disfigured, cloned face, poorly drawn eyes, asian



Artistic Style _

Prompt Source: www.lexica.art



Prompt

Cosmic (rogue thief:1.2) wearing mutiple layer (leather armor:1.2), nebulas, galactic, Concept art portrait by Greg rutkowski, Artgerm, hyperdetailed intricately detailed gothic art trending on Artstation triadic colors Unreal Engine 5 detailed matte painting, deep color, fantastical, intricate detail, splash screen, complementary colors, fantasy concept art, 8k resolution, gothic deviantart masterpiece

Negative

(symmetry:1.2), visible hand, asian, two face, big hair, open mouth, cartoon, high contrast, poorly drawn, Scribbles, Low quality, Low rated, Mediocre, Screenshot, Software, UI, watermark, text, overlay, getty images, cropped, low quality



Abstract World _

Prompt Source: www.lexica.art



Prompt

a landscape made of crawling brains and trypophobia, artstation landscape, artstation digital, illustrated by eddie mendoza and greg rutkowski, trending on artstation, cgsociety contest winner, cgsociety hd, cgsociety 4 k uhd, 4 k, 8 k

Negative

none



Day of the Dead

Prompt Source: www.lexica.art



Prompt

A (full body:1.3) shot at 8k resolution, splash art, fantastic comic book style, photorealistic, anatomical realistic digital painting portrait of a female latino (mexican muertos queen:1.3) in white (silk dress:1.1), (long curly red hair:1.1), (medieval town:1.3), light particle, analog, very detailed skin, very detailed eyes, (elden ring style:1.3), (warhammer style:1.1), concept artist, global illumination, depth of field, splash art, art by artgerm and greg rutkowski and viktorija gavrilenko

Negative

(symmetry:1.2), visible hand, asian, two face, big hair, open mouth, cartoon, high contrast, poorly drawn, Scribbles, Low quality, Low rated, Mediocre, Screenshot, Software, UI, watermark, text, overlay, getty images, cropped, low quality



Weather Effects

Prompt Source: www.lexica.art



Prompt

full body, (walking:1.1), (slow motion:1.2), assassin wearing black cloth made of liquid paint, wet dripping mascara, raining, wet, red cloak, (insanely detailed:1.5), ((analog)), (highest quality, Alessandro Casagrande, Greg Rutkowski, Sally Mann, concept art, 4k), (colourful), (high sharpness), ((detailed pupils)), red eyes, ((painting:1.1)), (digital painting:1.1), detailed face and eyes, Masterpiece, best quality, highly detailed photo:1, 8k, detailed face, photorealistic, silver Hair, ponytail hair cut, ecstatic:1.1), (older woman:1.3), By jeremy mann, by sandra chevrier, by maciej kuciara, ((samurai)), sharp, ((perfect body)), realistic, real shadow, 3d, ((crop top)), ((full body)), ((forest background)), (by Michelangelo)



Negative

flower, metal, symmetry, (bad art, low detail, pencil drawing, old, mature:1.6), (plain background, grainy, low quality, mutated hands and fingers:1.5), (watermark, thin lines:1.3), (deformed, signature:1.2), (big nipples, blurry, ugly, bad anatomy, extra limbs, undersaturated, low resolution), disfigured, deformations, out of frame, amputee, bad proportions, extra limb, missing limbs, distortion, floating limbs, out of frame, poorly drawn face, poorly drawn hands, text, malformed, error, missing fingers, cropped, jpeg artifacts, teeth, unsharp, Low quality, Photo, Artifacts, Table, Paper, Pencils, Pages, Wall, watermark, signature

RPG v4 Workflow >

The following workflow was optimized to help produce high quality RPG style avatar. Here is an overview of the high level process you can use to create your artwork.

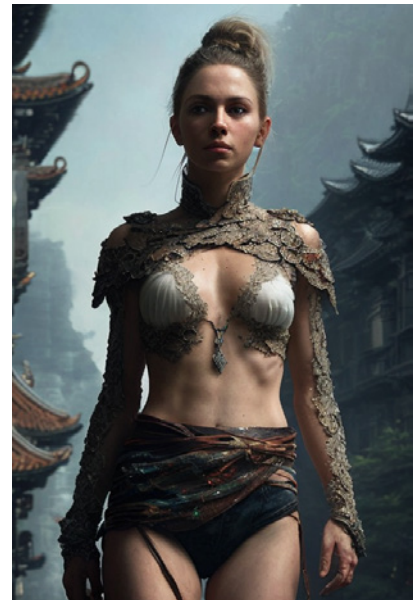
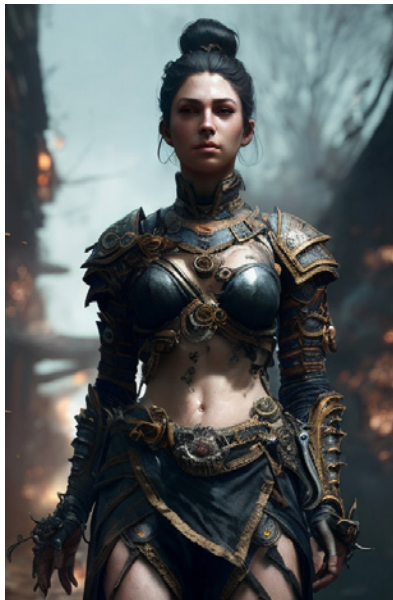
Flow 1 | Generate a Hi-Rez image

Select a Seed	Create a grid	Select a style	Generate a Hi-Rez
Generate 12 images with -1 as your seed. Cycle through the result and choose a see you like. Seed number is displayed under our image preview. Replace -1 with your seed for the next steps.	Set your batch to 1. Using the X/Y/Z plot in your script menu, choose STEPS and enter the value 30,50,75,105,150 for the X and select CFG Scale for the Y with the value 3,4.5,6,6,7	Using the StylePile in your script menu, set Image Type to Random and set Direction to Random. Generate a batch of 12 images. Look under the image preview to choose the best combination.	Set your batch to 1 and change your Image Type and Direction to the style you want. Click 'Hires Fix' and set the strength to 0.5 and upscale by 2 or 2.5 depending on your video card capacity.

Flow 2 | Polish with IMG2IMG

Select a Seed	Create a grid	Select a style	Send to IMG2IMG
Generate 12 images with -1 as your seed. Cycle through the result and choose a see you like. Seed number is displayed under our image preview. Replace -1 with your seed for the next steps.	Set your batch to 1. Using the X/Y/Z plot in your script menu, choose STEPS and enter the value 30,50,75,105,150 for the X and select CFG Scale for the Y with the value 3,4.5,6,6,7	Using the StylePile in your script menu, set Image Type to Random and set Direction to Random. Generate a batch of 12 images. Look under the image preview to choose the best combination.	Set your image height and width to the size you want (x2 if your video card can do it). Replace the prompt with a generic prompt style you wish to apply. Set the denoising strength to 0.5.

<< rich | poor >>



Example of IMG2IMG flow**Step 1 |** Generate your main character with your custom prompt

Method	TXT2IMG
Size	512 x 768
Model	RPG v4
Diffusion	DPM++ 2S a Karras
VAE	vae-ft-mse-840000-ema
Sample	105 steps @ CFG 4.5
Batch	12
Seed Test	-1

Step 2 | Choose a **seed** and explore **render style** using your selected seed

Method	TXT2IMG
Size	512 x 768
Model	RPG v4
Diffusion	DPM++ 2S a Karras
VAE	vae-ft-mse-840000-ema
Sample	75 steps @ CFG 5.5
Batch	12
StylePile	Image Type: Random
	Direction: Random
Seed Test	1576757698

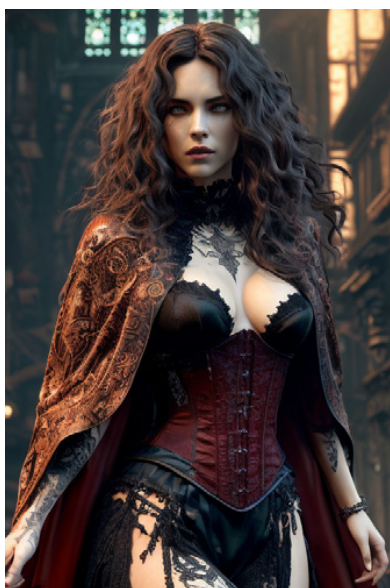
Step 3 | Run a IMG2IMG Polishing Prompt

Sample of a prompt | beautiful (swedish:1.3) wearing stunning outfit, (insanely detailed:1.5), light particle, (mist on the floor:1.2), ((solo)), (highest quality, Alessandro Casagrande, Greg Rutkowski, Sally Mann, concept art, 4k), (colorful), (high sharpness), ((detailed pupils)), red eyes, ((painting:1.1)), (digital painting:1.1), detailed face and eyes, Masterpiece, best quality, highly detailed photo:1, 8k, detailed face, photorealistic, dark and gloomy, By jeremy mann, by sandra chevrier, by maciej kuciara, ((small Breast)), ((samurai)), sharp, ((perfect body)), realistic, real shadow, 3d, ((full body)), ((dark and gloomy church background:1.2)), (by Michelangelo)

Add negative word | (bad art, low detail, pencil drawing:1.6), (plain background, grainy, low quality, mutated hands and fingers:1.5), (watermark, thin lines:1.3), (deformed, signature:1.2), (big nipples, blurry, ugly, bad anatomy, extra limbs, undersaturated, low resolution), disfigured, deformations, out of frame, amputee, bad proportions, extra limb, missing limbs, distortion, floating limbs, out of frame, poorly drawn face, poorly drawn hands, text, malformed, error, missing fingers, cropped, jpeg artifacts, teeth, unsharp

When creating multiple avatars, you can choose a two-pass option to uniformize the style. Lower denoising if you wish to limit the intensity: **contrast 2nd pass** (90 steps @ CFG 6) with **0.45 denoising** or use higher value to create a more **stylish 2nd pass** (150 steps @ CFG 3) with **0.71 denoising**

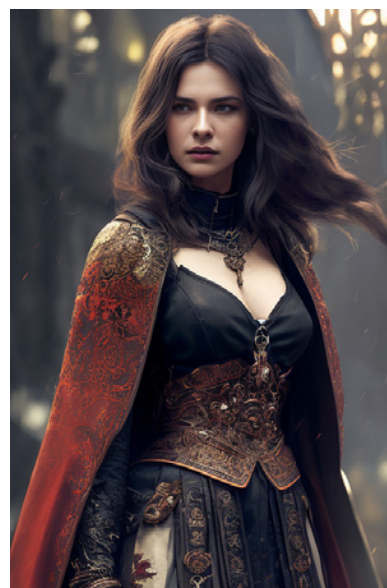
Prompt StylePile



Two-Pass Contrast



Two-Pass Stylish



Character Core Style >

Full Heavy Armor (male:1.2)



demi-god royal king male



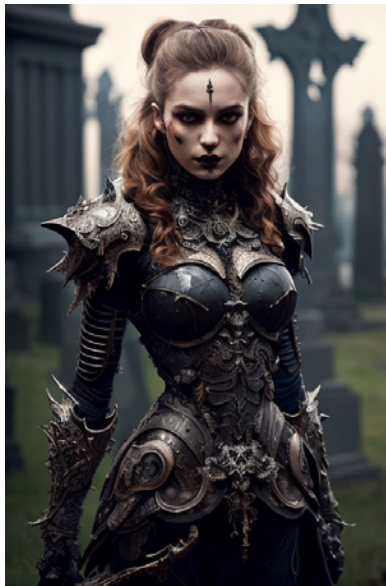
Cosmic Rogue blue cloak



Light Silver Armor female



Undead Queen (bone armor:1.3)



Leather Armor Rogue Female



Character Race and Class |

male orc dark skin



Female Druid wearing fur



female angel warrior



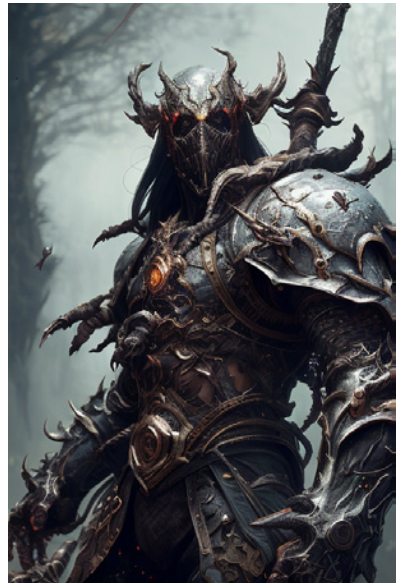
Female Cultist body tattoo



Male samurai (edo era:1.1)



male demon



Armor Type |

undead queen (bone armor:1.3)



(rogue:1.2) assassin wearing long cloak



Full body armor made of stone



Ghost assassin long red (cloak:1.2)



APPENDIX

If you are new to the world of AI image generation, here are some resources to help you get the most out of it.

Automatic1111 |

<https://github.com/AUTOMATIC1111/stable-diffusion-webui#installation-and-running>

StylePile Extension |

<https://github.com/some9000/StylePile#installation>

Weight System |

Weight system lets you increase the intensity of a prompt, or reduce the importance of it by playing it in the negative prompt. (metal armor:1.1) will increase the emphasis of the metal armor. In general, use numbers between 1.1 and 1.3. To focus on cloth armor, you can put (silk cloth armor:1.2) in your prompt and add (metal:1.1) in your negative prompt.

Hi-Rez Art |

If your video card has the capacity, you can create stunning hi-resolution artwork with the Hi-Rez Fix using 4x-UltraSharp Upscaler and 0.4 denoising for an upscale of 2 to 3.

Contact & Support |

If you like this model, please take the time to rate the model on <https://civitai.com/models/1116/rpg>.

Feel free to include your creation using this prompt guide in your rating.

If you post your work on <https://www.reddit.com/r/StableDiffusion/>, please include a reference to this guide or to the model source.



THANK YOU